

# Public Outreach



# General Activities

---

**Supporting Outreach Agency-Wide**

**Piloting New Ways To Communicate**

**Developing Consistent Practices & Resources**

**Improving Customer Service Channels**

**Turning Data Into Information**

**VERMONT** Vermont Agency of Transportation  
State of Vermont

Vermont.gov | Home | Contact | Site Map

Search AOT Search

Citizen Info Travel Doing Business Infrastructure Projects Government Resources Publications & Maps About Us

**Spotlight**  
2014 Fact Book and Annual Reports  
Ready for Winter?  
Find A Project  
I-91 Brattleboro Bridge Project - Including Traffic Cams Strategic Plan  
FY2015 Transportation Program State Transportation Improvement Program

**Connect With Us**  
YouTube Facebook Twitter LinkedIn

**DMV Online Services**  
Change Your Address  
Renew Your Vehicle Registration  
Request a Duplicate Registration  
Pay Your Reinstatement Fee  
Visit the DMV website

**511 Road Reports**  
Check Current Road and Driving Conditions  
Tweets  
511VT  
US RT 2 in So. Hero #VT #BTV by Jolly store closed due to accident. Unknown duration. 511VT.com  
511VT  
go! VERMONT CONNECTING OPPORTUNITIES

**Quick Links**  
Getting Around: Maps, Road Conditions, Traffic & Weather Cams, Scenic Byways, Park & Rides, Real Areas, Public Transit  
Working With Us: Advertised Projects, Permits, RFP Status, Geodetic Information, CADD Standards, Grants  
Inside VTrans: Operations, Finance & Administration, Program Development, Policy, Planning & Intermodal Development, DMV

**Transportation Options**  
AIRPORTS BUSES FERRIES RAILWAYS BICYCLES & PEDESTRIANS COMMUTERS

A Vermont Government Website Copyright © 2014 State of Vermont. All rights reserved.  
Accessibility Policy Privacy Policy

# Web Resources & Mobile Tools

vtransmaps.vermont.gov

Project Information Mobile

Project Info

View projects for BENNINGTON

Map view showing project locations in Bennington.

vtransmaps.vermont.gov

Project Information Mobile

Project Info

COLCHESTER

- BIKE & PEDESTRIAN FACILITIES
- INTERSTATE BRIDGES
- PAVING
- ROADWAY PROJECTS
- SAFETY & TRAFFIC OPERATIONS
- STATE HIGHWAY BRIDGES
- TOWN HIGHWAY BRIDGES

vtransmaps.vermont.gov

511VT Mobile

Map List Help About Legend

Map view showing project locations across Vermont.

vtransmaps.vermont.gov

Project Information Mobile

Project Info

COLCHESTER

**General Information**

Program: ROADWAY PROJECTS  
Name: COLCHESTER  
Number: STP 0207 ( )  
Responsible Division: ROADWAY DESIGN  
Road/Route: VT 2A  
Local Name:  
ARRA Funds: NO  
Consultant Design: NO  
Operations District: 5  
County: CHITTENDEN COUNTY  
Regional Plan. Comm.: CHITTENDEN COUNTY REGIONAL PLANNING COMMISSION  
Description: RECONSTRUCTION OF VT2A FROM THE ESSEX TOWN LINE TO THE JUNCTION OF US7. CONTINGENT ON THE FINAL DESIGN OF THE CHITTENDEN COUNTY CIRCUMFERENTIAL HIGHWAY.

**Contact Information**

Project Manager: ROBIE,KENNETH A  
Project Manager Phone: 802-828-2645  
Project Manager Email: [KEN.ROBIE@STATE.VT.US](mailto:KEN.ROBIE@STATE.VT.US)  
Program Manager: ROBIE,KENNETH A  
Program Manager Phone: 802-828-2645  
Program Manager Email: [KEN.ROBIE@STATE.VT.US](mailto:KEN.ROBIE@STATE.VT.US)

# Facebook



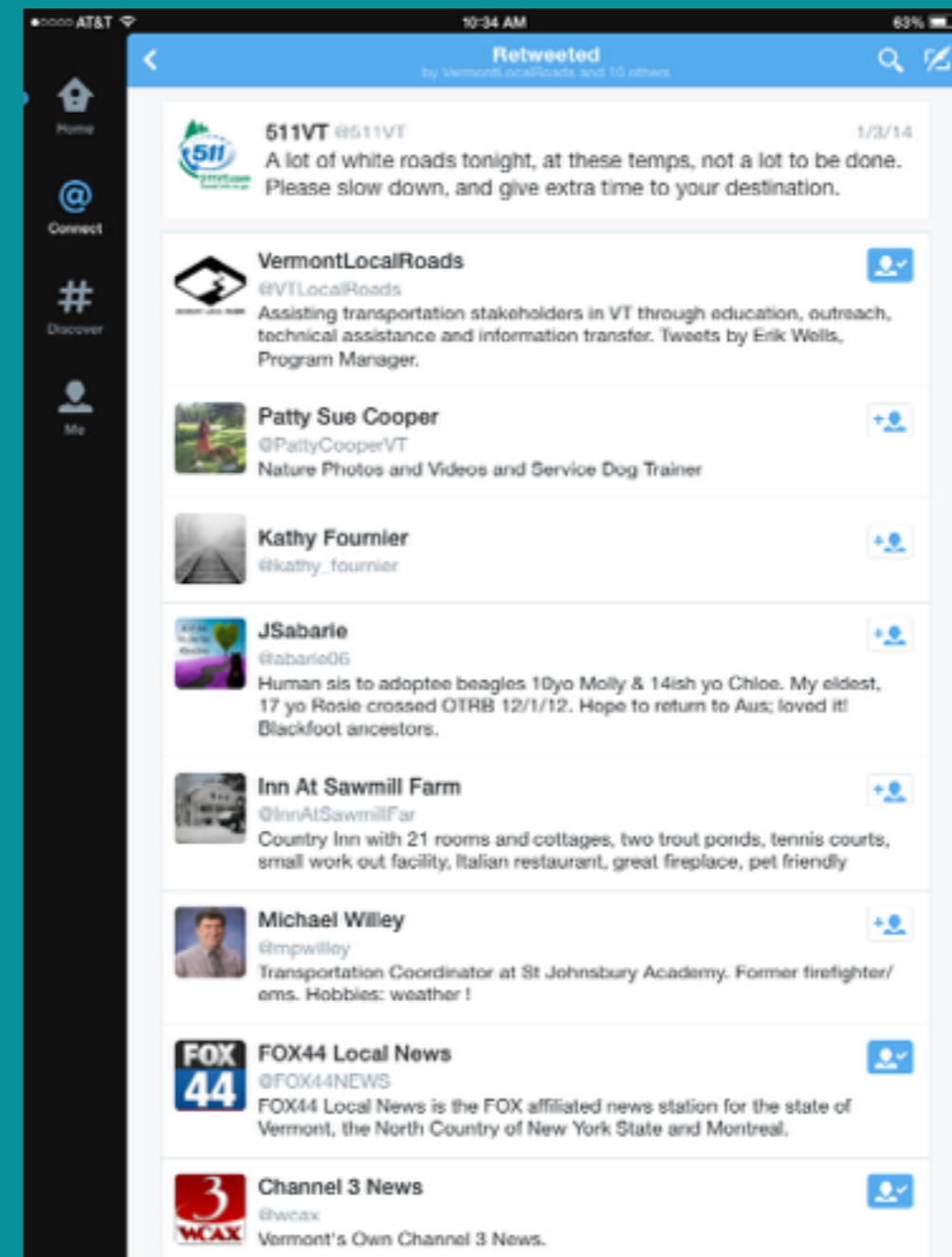
**Launched January 2012**  
**1000 Likes January 2013**  
**About 5700 Likes Today**  
**Major Customer Service Portal**



# @511VT Twitter Feed



Launched January 2012  
More Than 3500 Followers  
All Major Media Following  
TOC Operators Tweeting  
Coordinating With VEM, VSP



# On The Road

---



Weekly live updates on more than a dozen radio stations and WCAX-TV, plus a print edition during the construction season.

Updates as needed during storm events and other incidents.

Podcast in development.

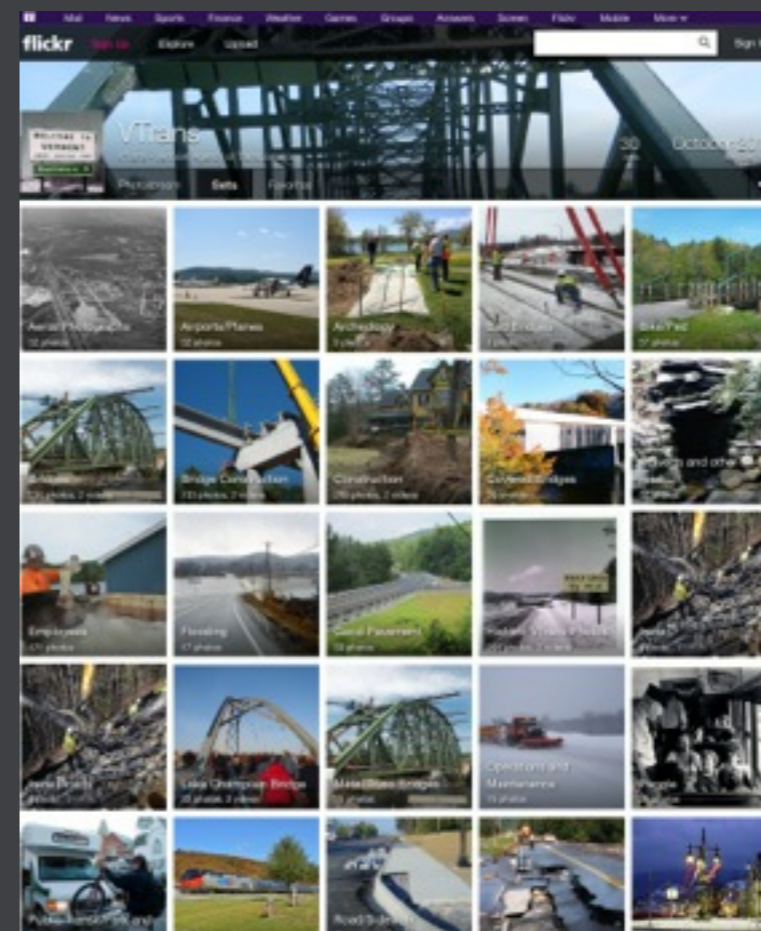
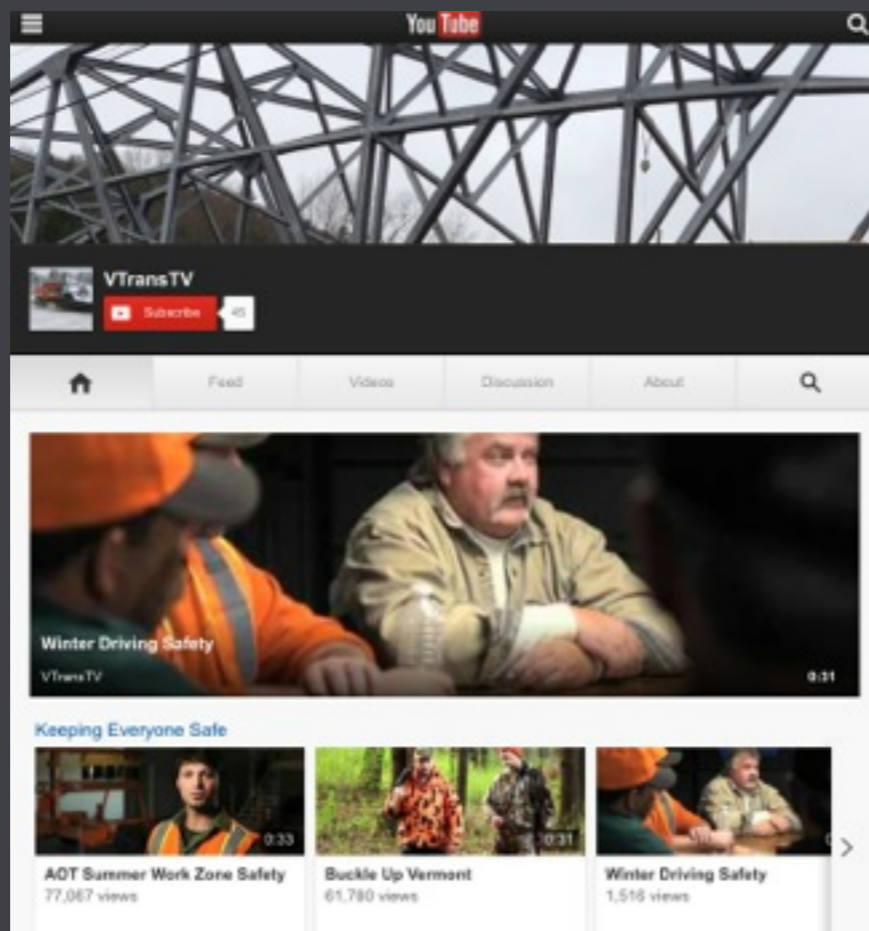


# YouTube & Flickr



PSA's, Trainings &  
Project Highlights

Internal Resource &  
Public Archive



# Amtrak

**10th Anniversary**  
1964-2014

**YOUR AMTRAK TRAVEL GUIDE TO VERMONT**  
FROM NEW YORK CITY TO MONTPELIER & LANSING

## New York By Rail

**SEASONAL PATH THROUGH HISTORY**  
A 50-page guide to the most beautiful and historically significant sites throughout the Empire State.

**New York State CANALS**  
Discover the rich history and scenic views of the state's waterways.

**I LOVE NY**  
Official State Travel Guide

AMTRAK

**WHY PAY FOR GAS & DRIVE  
GET 20% OFF & RIDE**

## VISIT VERMONT & SAVE 20%

Brooklyn hosts

## EscapeMaker's 3rd Annual LOCAL FOOD & TRAVEL EXPO

**FREE EVENT**  
day trips & getaways in Brooklyn & beyond!  
local food samples  
wine tasting  
50+ travel prizes!

More info: [www.visitbrooklyn.org](http://www.visitbrooklyn.org)  
[www.escapemaker.com/travelexpo](http://www.escapemaker.com/travelexpo)

**Saturday  
OCTOBER 5th**  
12pm-5pm

Brooklyn Borough Hall  
209 Joraleman St.  
Brooklyn, NY

AMTRAK zipcar



**\$12 TO BELLOWS FALLS**

[vermontvacation.com/amtrak](http://vermontvacation.com/amtrak)

VERMONT  
AMTRAK  
Enjoy the journey™



# Facts

